

# About Town



## Lydney Town Council Newsletter - Autumn 2016



### What does your Town Council do all year?

The standard answer is that we are the first tier (local council) of a current three tier system of local government, with Forest of Dean District Council, and Gloucestershire County Council (local authorities) being the next two tiers, all elected by people in the area.

Parish and Town Councils were formed by an act of parliament in 1894, to look after the interests of those who live within the parish/ town community, with the District and County Councils being responsible for health, police, education, planning, litter, public transport & highways amongst other things.

Parish and Town Councils do however have a wide and varied range of powers in relation to the provision of services and facilities which can and does bring direct benefit to the local community.

**What we are not is possibly easier to list.**

- We are nothing to do with the church, who are governed by Parochial Councils (PCC)
- We are not politically affiliated
- We are not "residents" associations or "lobby" groups
- Town councillors are not paid however, what we do is represent the residents who live within our Parish in matters of local government.

**Some of these include:**

- ⇒ Local Planning (which covers anything from satellite dishes to new developments and roads)
- ⇒ Economic Development
- ⇒ Environmental Matters
- ⇒ Community Projects
- ⇒ Leisure and Recreation

- ⇒ Contact with the District and County Council
- ⇒ Complaints (!)
- ⇒ Information and advice

Lydney Town Council is also Custodial Trustee of many of Lydney's community assets i.e Bathurst Park and Lydney Recreational Grounds which means as an elected member you would also undertake a trustee role.

**As Lydney continues to grow and prosper, the representational aspect becomes increasingly more important. Decisions taken by the District and County Councils may potentially affect the quality of life within our town, therefore the role of the Town Council is of utmost importance.**

#### Plans for 2017

- \* Floral Displays - The Town Council will be looking to expand on the floral display for 2017.
- \* Parkend to Lydney Cycle Path - The Town Council along with the Forestry Commission, Forest of Dean District Council and West Dean Parish Council are working on a project to link Lydney and Parkend to the rest of the cycle routes across the Dean. They have a route and are working on funding and gathering support for this exciting project.



### Casual Vacancies— Lydney East Ward

*Are you interested in wanting to help your local community to ensure local provisions for both the young and old are maintained and further enhanced?*

#### Why not become a Town Councillor?

*This is your opportunity to make a real difference!*

*Any persons wishing to be considered for co-option should send a written letter expressing their interest to the Chief Executive Officer to the Council,*

*on or before 12 noon on 14th October 2016.*

*The letter should include details of interests, experience and reasons for wishing to serve as a councillor. The applicant must not be disqualified from holding office as a Councillor (details available upon request). It is anticipated that the vacancies will be filled by co option at the Town Council Meeting to be held on*

*14th November 2016@ 7pm.*

### Congratulations to our local lads!

Andy Lewis made history by winning Gold in the first-ever PT2 Triathlon competition at the Paralympics while Jack Rutter, of the Lydney First Senior Team, led Britain's Cerebral palsy football side with a top sixth finish.



Andy Lewis



Jack Rutter



# Bathurst Park & Recreation Trust



"A gift to the town in 1892, Bathurst Park is one of the greatest community assets in Lydney. It plays host to significant numbers of events and functions every year from church choirs to police action days, elaborate fireworks shows to professional bollywood dancing (April 2016). The latter being particularly memorable, as such things are not common in Lydney.

Compliments on the appearance/maintenance of the park are commonplace, and credit is due to our devoted team of grounds men, who work hard throughout the year to ensure we can all enjoy this green space. Likewise, Lydney Town Council's administrative staff deserve thanks for consistently demonstrating a commitment we should all be proud of.

But for all its merits (and there are many), one of the biggest challenges facing Bathurst Park in 2016 is vandalism. Having been Trust Chairman for 18 months it is never far from my mind, and we are currently exploring potential solutions to this. Our fencing too, is in need of repair.

As we leave summer, the autumnal colours will leave Bathurst Park looking particularly beautiful, so do be sure to visit. Our annual fireworks display should also be a key date in the diary, this year taking place November 4th. This is always a spectacular display, with several stalls selling hot food/drink to the traditionally very large crowds.

I am always pleased to see such high levels of public affection for Bathurst Park, and look forward to this continuing over the coming years."

*Cllr Harry Ives*

*Bathurst Park & Recreation Trust Chairman*

## Lydney Recreation Trust



### What is Biodiversity?

Biodiversity is the variety of life. It can be studied on many levels. At the highest level, you can look at all the different species on the entire Earth. On a much smaller scale, you can study biodiversity within a pond ecosystem or a neighbourhood park. Identifying and understanding the relationships between all the life on Earth are some of the greatest challenges in science.

Biodiversity and construction are both important to our social and economic wellbeing. It is accepted that construction is necessary for continued economic growth, and that a balance can be struck between protection of biodiversity and continued development.

Lydney Recreation Trust acknowledge the need for biodiversity and as such in an effort to protect our wildlife species have created 'wildlife/bug hotels' on Lydney Recreation Trust land at Lydney Lake for which it has already received many positive comments.

The Trust believes that by providing the right habitats it can greatly increase the number of beneficial insects. Some wild invertebrates, such as bumblebees and solitary bees, are declining in numbers in the wider countryside, so by providing homes we can contribute to their conservation.

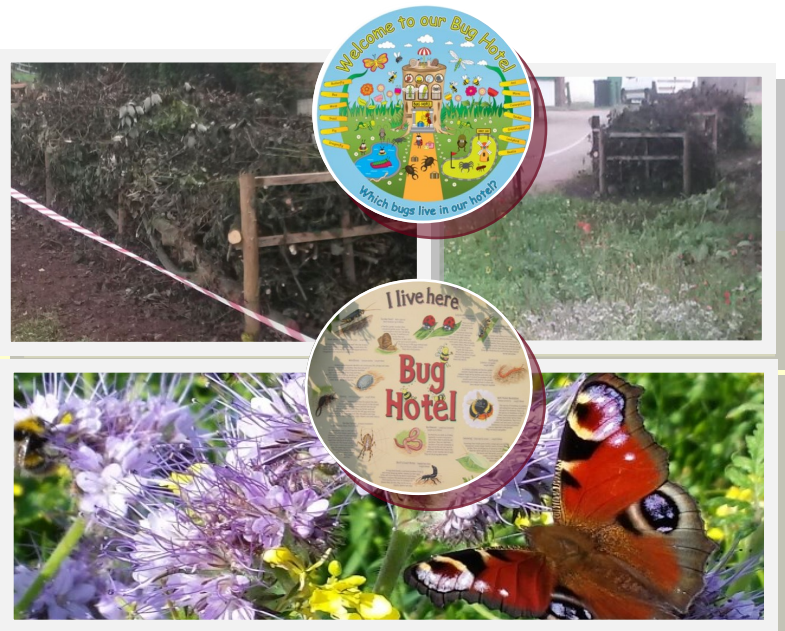
### How you can become involved in Biodiversity:

Our gardens are home to a huge range of living creatures. It's estimated that the average garden could hold 2000 insect species! They play a very important role in the garden: eating pests, pollinating plants, contributing to the ecosystem and attracting other wildlife like birds. But their numbers are dropping around the world, thanks to pesticide use and the loss of their natural habitats.

So it's up to us gardeners to lend them a hand.

After all, they help us out!

Make your garden a safe haven for them by building an insect hotel!





## **Friends of Lydney Hospital - Message from the Chair**

Discussions are nearing completion with the NHS Trust on a joint-funded upgrade of the X-ray suite which will cost around £200,000.

This should go ahead in the next few months; when completed it will provide a state-of-the-art facility to rival any other community hospital in the County. The new bedside chairs are a big improvement, a visible example of the way in which funds raised by local people can make a difference to the comfort of patients and to the appearance of the in-patient wards. The Friends will continue to fund major and other smaller projects as funds permit.

The review into Forest health and social care facilities, started in January, is ongoing. It is now probable that various options will be presented for community consultation later this year. The Friends continue to participate in this review and in other debates including the possible changes to MIIU opening times throughout the County, details of which have yet to be announced.

We are particularly pleased to welcome our new Hospital Matron Mrs Cheryl Haswell who joined the team in June.



---

# **Lydney War Memorial Refurbishment**

By commemorating lives lost, war memorials help us understand past conflicts and our local history.

From the Cenotaph in London to rolls of honour in churches and schools, there are thousands of war memorials in the UK. We believe it's important to conserve them for the future and help more people to explore their heritage that's why Lydney Town Council are delighted that the War Memorial on Church Road has been refurbished to the highest standard.

War memorials are among the most tangible and precious reminders of the sacrifices made by communities during the First World War and the Government is committed to seeing all the nation's memorials placed in a good state of repair by 2018. As part of this, Historic England, acting on behalf of the Secretary of State for Culture, Media and Sport, has resolved that over the period 2014-18 it will greatly increase the number of memorials which are listed.

The memorial in Lydney is located near the parish church in memory of the men of this parish who fell in the Great War of 1914-1918 & 1939-1945. It came to the Town Council's attention that the inscriptions on the War Memorial were becoming unreadable. The Council therefore took the decision to arrange for the stone to be cleaned by a local firm of stonemasons who then placed granite plaques onto the Memorial in order that the names of the fallen could continue to be honoured in the future.



Before



After



### **GETTING STARTED ON A COMPUTER**

If you would like to learn how to get online, please contact us to find out how. Tel: 01452 528491 or email [matthewkw@grcc.org.uk](mailto:matthewkw@grcc.org.uk)

If you are a carer, we offer free one-to-one support for a 6 session period to help you to become more confident using your technology, online services and security. If you are a community group and are looking to set up a computer club, contact us to find out how we can help. If you are an individual, we can put you in touch with groups and organisations which can help.

### **CANCER REHAB EXERCISE GROUP AT GREAT OAKS**

Do you need to regain some energy as you recover? Do you want help to improve strength and stamina? Come along and exercise in a friendly and understanding environment on Thursday mornings at Great Oaks Hospice, The Gorse, Coleford, 10.30 -11.30am.

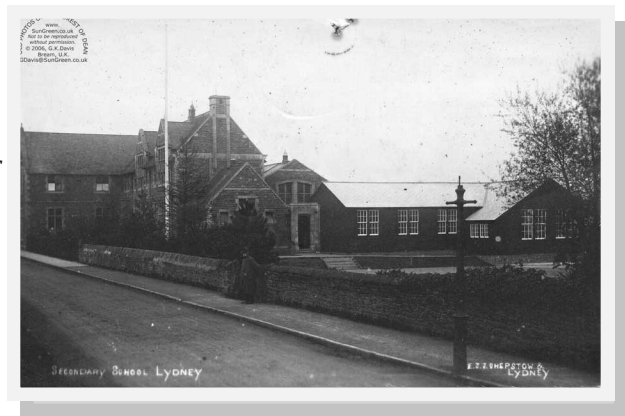
£3 per class, payable to FoDDC. Refreshments and social time after the class.

FFI contact the Healthy Lifestyles Team on 01594 812617

If you are over 50 and live in West Dean, Coleford, Lydney, Cinderford, Ruspidge, Drybrook, Ruardean, Blakeney and Awre and you need help with daily living, please contact me, Mike Morgan, your local Village Agent and I will arrange a visit at your home or elsewhere to discuss how I can help you. My contact telephone number is: 07776 245 712

# The Lydney Grammar School Foundation

The LGS Foundation is a Registered Charity set up following the closure of the town's Grammar School in the early 1970's. It exists to promote the education, including social and physical training, of any persons(s) who live within the old catchment area of the school, and who are in need of financial assistance. The catchment area includes Lydney and the outlying villages from Beachley to Newnham and northerly to St Briavels, Bream, and Parkend.



Awards are awarded not only for assistance with further education and other approved courses but also for such items as outfits, clothing, tools, instruments or books to assist such persons to pursue their education and development.

Recent awards have been given to Guiding trips, School courses, swimming courses, conservation research, yachting, theatre productions, musical instruments, etc.

The awards are granted by seven Trustees' who meet 3-4 times per year. Applications are presented by the Clerk and each application is decided on it's own particular merit. Amounts can vary depending on the total cost of the application and also by the ability that can be self-funded.

Please do not hesitate to contact the Clerk, Mr Ron Beddis, by telephone 01594 841887 or by email [rbeddis@gmail.com](mailto:rbeddis@gmail.com) for any further information and assistance.



Free courses to help with stress, anxiety, low self-esteem, sleep problems and other similar issues are all available through the NHS. The courses are being provided by the county's Let's Talk service and are based on Cognitive Behavioural Therapy (CBT).

Alex Burrage, of Let's Talk, said: "One in four of us will be experiencing a mental health condition at any given time. Our courses are all held in community venues, and some are held during the day time while others are held in the evenings, so there is usually a course to suit everyone's needs.

"They are educational in nature and there's no need to share personal information or even speak in front of other people on the course, unless you want to.

"We've helped thousands of people overcome the most common mental health problems we can all experience from time to time, and the feedback we get from people who complete our courses is fantastic. Many people say they have changed their lives."

Let's Talk is an Improving Access to Psychological Therapies service provided by 2gether NHS Foundation Trust.

As well as courses, Let's Talk also provides therapy over the phone as well as face-to-face. There are also guided self-help books you can access.

To find out more about courses in your area, ring 0800 073 2200 or visit [www.talk2gether.nhs.uk](http://www.talk2gether.nhs.uk)

**Warm & Well**  
a fitter home for a healthy future

**Free\* Central Heating**

**No central heating in your home?**

Up to £4,500 grant available to households in Gloucestershire and South Gloucestershire

Be warmer, healthier, more energy efficient and reduce your bills

**Call NOW! Funding ends soon**

**Call us on: 0800 500 3076**

\*Subject to eligibility, funding and maximum grant allowance

Gloucester City Council, Forest of Dean, CHELTENHAM, Tewkesbury Borough Council, COTSWOLD DISTRICT COUNCIL, STROUD DISTRICT COUNCIL, South Gloucestershire

Go on, throw a  
**Blooming Great Tea Party!**



**Marie Curie is opening a new group in Lydney**

We are currently looking for new supporters to get involved with a variety of roles.

Our fantastic fundraising groups help raise vital funds for people living with a terminal illness and their families throughout the UK.

They play an important role by taking part in all our national fundraising campaigns such as the Great Daffodil Appeal.

We also rely on them to help organise fundraising events and activities within their local community. Our groups act as ambassadors, helping to spread the word about the work of Marie Curie and encouraging and supporting local people, clubs and organisations to fundraise for us too.

To find out more please contact Richard Scott on

0117 942 7132

[mariecurie.org.uk/groups](http://mariecurie.org.uk/groups)

**SAVE THE DATE!**

As winter approaches and we start to think of Fireworks night and Christmas, please note that the arrangements for the Fireworks are a little different this year. Event details are as follows:



**Fireworks Night:**

**Friday 4th November 2016** at Bathurst Park, Lydney. Gates open at 6.00pm, firing starts at 7.15pm. Admission £3.00 for 16+, £2.00 for 5-16 years, under 5's free.



**Christmas Light Switch-on:**

**Saturday 26th November 2016 at 6.00pm.** Watch out for the usual festivities including fairground rides, hot roasted chestnuts and a visit from Father Christmas!



Open every day from 10am Until Nov 5th

**The Coffee House**

Find us on **facebook.**

07511 835551

Join us for:  
**MONDAYS** (12 - 2pm)  
Kids eat for £1\* (one per every £5 spent, excluding kids meal)

**SOUPER WEDNESDAYS** (12 - 2pm)  
Homemade soup & sandwich with tea or Americano for only £5.95\*

**FRIDAYS** (all day)  
Buy a Regular Hot Chocolate, Mocha or Latte & get a slice of cake for just £1\*

**SATURDAY & SUNDAY SUNDAES** (2pm - 4pm)  
Traditional Ice cream sundaes from £2.95\*

**SUNDAYS** (12 - 2 pm.)  
The Coffee House Sunday roast bloomer £3.95\*

ALL AVAILABLE UNTIL NOV 5<sup>th</sup>. TERM TIME ONLY.\* TERMS AND CONDITIONS APPLY

8<sup>th</sup> October 2016 **PRINCESS & PIRATES DAY** £3 per child. Booking essential  
Dress up & Join us from 10am-12pm for fun themed activities & fancy dress comp.

**DON'T FORGET TO FIND US ON BONFIRE NIGHT FOR ALL YOUR FAVOURITE HOT DRINKS & SNACKS**

Visit us in Bathurst Park, Whitecross Rd, Lydney



Lydney Town Council welcomes a new member to the team!  
Welcome  
**Carolyn Whittington.**  
Carolyn is the new finance assistant

**AUTUMN GARDENING**



- Autumn is the perfect time to plant your garden as the soil is warm and rain frequent.
- Be it perennials, evergreens, fruit, vegetables or trees. The ideal time is 6 weeks before the first frost is expected. This gives your planting the perfect head start for spring growing.



## USEFUL TELEPHONE NUMBERS

**Police: 101**

**Crimestoppers: 0800 555111**

**NHS Direct: 111**

**Samaritans: 01452 306333 or 08457 909090**

**National Drugs Helpline: 0800 776600**

**Hospitals: Dilke Hospital 0300 4218640.  
Lydney Hospital 0300 4218722**

**Gloucestershire Dental Helpline: 08454 220505. Out of hours 08451 207179**

**Pregnancy Crisis: 01452 308700**

**Child Protection: 0800 800500**

**Alcoholics Anonymous: 0845 7697555**

**Al-Anon for friends & relatives of alcoholics: 0207 4030888**

**Forest of Dean District Council: 01594 810000**

**Cinderford Town Council: 01594 822599**

**Coleford Town Council: 01594 832103**

**Lydney Town Council: see opposite**

**Newent Town Council: 01531 820638**

**Injured sheep and sheep nuisance: Commoners Association 01594 827485 or Forestry Commission 0300 064 4800 (switchboard open 9.00am—3.00pm Monday to Friday)**

**Gloucestershire County Council: 01452 425000**

**County Council Highways Dept: 08000 514514**



**Your next Councillor Surgery is**

**Saturday 19th November 2016**

**- Keep an eye on our facebook page for further details including time & location!**



[www.facebook.com/Lydney-Town-Council](http://www.facebook.com/Lydney-Town-Council)

**HAVE YOUR SAY!** Although your Town Councillors may be contacted at any time should you have any form of concern, this Newsletter is an excellent way to bring your views, ideas, concerns and comments to a wider audience - in other words, to everyone within our community! Any subject is permitted; You may wish to ask a question (*replies printed in the same edition wherever possible*), You may like to 'air' a concern or just generally pass comment relating to a community issue? Whatever your thoughts, the Town Council cannot assist if they are unaware — **so help us to change this ! C/O Lydney Town Council, Council Chambers ,Claremont House, High St, Lydney GL15 5DX. *Your views matter to us!***



## BATHURST POOL SPLASH NEWS!!

Our Summer Season has now finished.

We look forward to seeing you all back for another amazing swimming season in 2017!

Please check our Facebook Page for our Bathurst Bathers Photographic Series and for more up to the moment information about the pool. We will still answer any of your queries during our 'shut down' period.

**Thank you for supporting us and using the pool this summer (2016). We have had a fabulous season!**

*We are still raising money to pay for increased security at the pool following the vandalism early this year. We will still gladly accept cheques made payable to 'Friends of Bathurst Pool'. Please send cheques to: 77 High Street, Aylburton, Lydney, Glos. GL15 6DE. NEW: You can also donate to our cause via our website or our Donate Now button on our Facebook Page.*

- Contact Us with any questions you may have either by email or call us on 01594 842036 / 07810 507752 or our Facebook Page.

Website:  
[www.bathurstpool.co.uk](http://www.bathurstpool.co.uk)

Facebook: Bathurst Pool  
@Bathurst Pool



## USEFUL TELEPHONE NUMBERS

### Town Councillors

**Bob Berryman (Mayor) - 01594 842036**

**Dave Beddis - 07453 319883**

**Derek Biddle - 01594 842180**

**Rose Christodoulides - 07546 552773**

**James Greenwood - 01594 842454**

**Harry Ives - 01452 427612**

**Colin Legg - 07481 127336**

**Brian Pearman - 01594 841452**

**Donald Pugh - 01594 845161**

**David Street - 01594 844721**

### Town/District & County Councillor

**Alan Preest - 01594 564107**

### Town & District Councillor

**Carol Harris - 01594 841026**

### District Councillors

**Frankie Evans - 07951125597**

**Jim Simpson - 07747048976**

**James Bevan - 01594 842146**

**Bill Osborne - 01594 841970**

### Council Staff

#### Chief Executive Officer/RFO

- Mrs Jayne Smailes - 01594 842234

#### Executive Officer

- Miss Carol Wheeler

#### Payroll Administrator

- Mrs Hilary Exton

#### Finance Assistant

- Mrs Carolyn Whittington

#### Admin Assistant

- Miss Kate Hammond

#### Head Groundsman

- Mr James Young

#### Leading Hand/ Groundsman

- Mr Peter Edwards

#### Groundsman

- Mr Tommy Wales

- Mr Richard Brown

- Mr Anthony Bayliss

